

# BARGE

## PARTICULARS

Vessel type	Barge
Official Number	1300802
Flag/Port of Registry	Comoros/Moroni
Built	2014
Classification	American Bureau of Shipping

## DETAILS

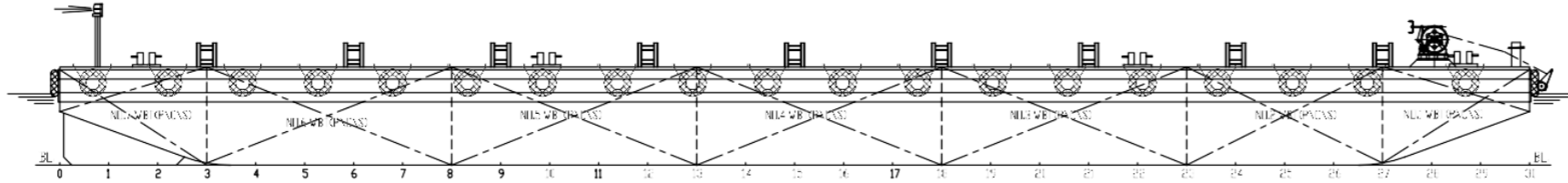
Length overall	54.90 m
Breadth	24.38 m
GRT-NRT	1257/377
Depth moulded	3.66 m
Maximum draft/DWT	2.672 m/3374.29 tons
Lightship draft/weight	0.73 m/828 tons
Clear deck Space	935 m <sup>2</sup> (subject to deck layout)
Deck strength	20 t/m <sup>2</sup>

## MOORING EQUIPMENT

Type	4-point mooring system
Winches	2 x 22 tons Transvictory hydraulic double drum winch
Winches pull load test (SWL)	22 tons @ 1 <sup>st</sup> Layer
Winches brake holding test	36 tons @ 1 <sup>st</sup> Layer
Winches wires	Each drum is fitted with 500 m steel wire rope of 30 mm diameter
Winches powerpack	2 x 55 kW Elec-Hydraulic
Anchors	4 x Spek anchors @ 3 tons
Fairleads	4 x Anchor four-roller fairleads, SWL 80 tons
Towing brackets	2 x Tow Bracket, SWL 65T Fwd 2 x Tow Bracket, SWL 65T Aft
Bollards	8 x Double Bollards, SWL 45 tons
Fendering	Truck Tires

177-71-10-2

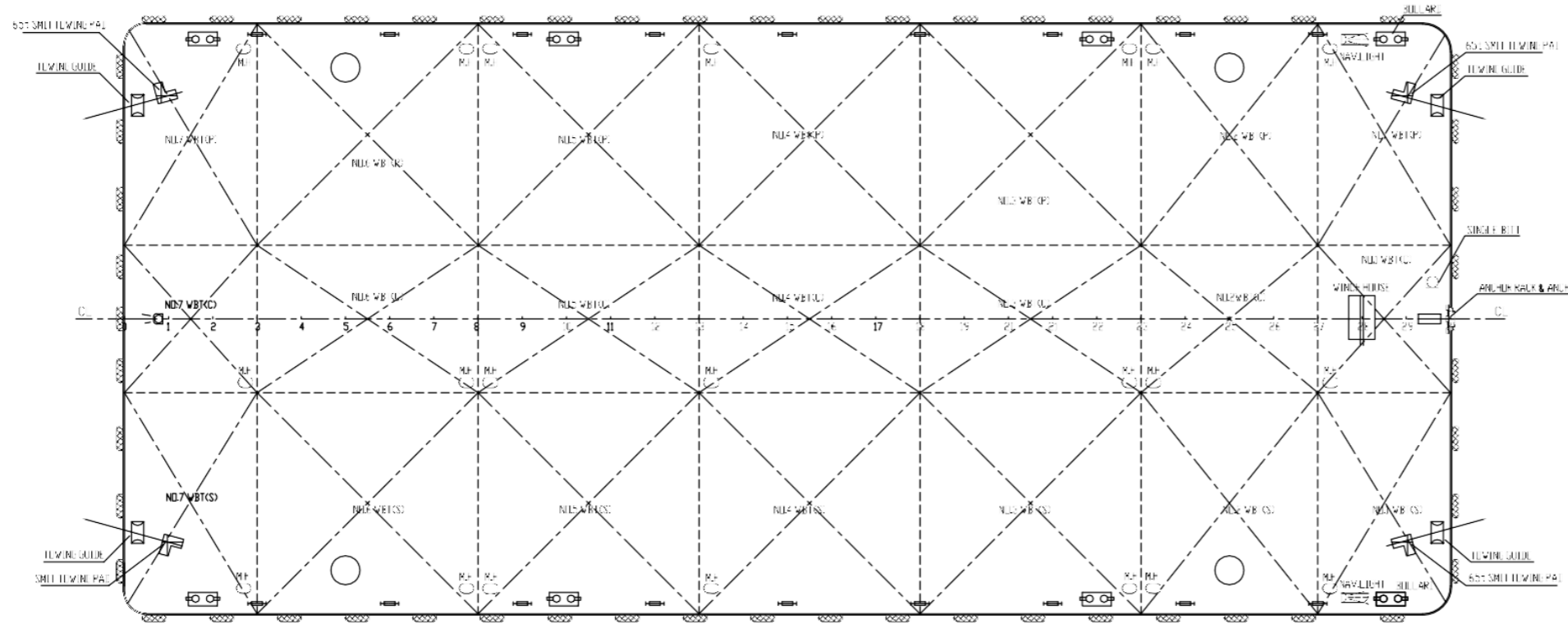
侧视图  
OUTSIDE PROFILE



主要尺寸

LENGTH	船长	54.80 m
BREADTH	型宽	24.38 m
DEPTH	型深	3.66 m
DRAUGHT	设计吃水	2.66 m
DECK AREA	甲板面积	29 1/2 m <sup>2</sup>

主甲板  
MAIN DECK



FILED FOR  
REFERENCE ONLY

PROJECT	180'X80'X12'	
DECK NAME	ARC. SALAS WATER TANKS SARC.	
TITLE	总布置图 GENERAL ARRANGEMENT	
SCALE	SCALE 1:100	NO. 1 TOTAL 1
DATE	DATE	DATE
DESIGNER	DESIGNER	DESIGNER
CHECKER	CHECKER	CHECKER
APPROVER	APPROVER	APPROVER
COMPANY	南通成志船舶工程有限公司 Nantong Chengzhi Shipbuilding Co., Ltd.	
ADDRESS	南通成志船舶工程有限公司 南通市通州区平潮镇平潮村 Nantong Chengzhi Shipbuilding Co., Ltd. No. 118, Pingchao Town, Pingchao Village, Tuntou District, Nantong City, Jiangsu Province, P.R. China. Tel: +86-513-87580328 Fax: +86-513-87580328	